



Travel Service Inc., Hawaii

758 Kapahulu Avenue, Ste#220 \*\*\* Honolulu, HI. 96816

Tel: (808) 739-9010 Fax: (808) 735-0142 TAR#4988

Email address: [nandktravel@hawaiiintel.biz](mailto:nandktravel@hawaiiintel.biz)

## **Special Japan Tour** **( May 09 – May 19, 2024 )**

**Highlights of this tour:** See the country side of Kyoto including Arashiyama and “hands on experience” in Kyoto, ride the JR Tokai Shinkansen, Shibazakura Festival & 2 villages near Mt. Fuji, Walking around Tsukiji Fish Market, Asakusa Kannon Temple, Ueno Ameyoko, & Sugamo and see “Mahu” Matinee Show in Tokyo

### **THURSDAY, May 9<sup>th</sup>**

### **Honolulu – Osaka/ Kansai**

9:00a.m. Please meet NADINE SHIMABUKURO, your local bilingual tour guide at the Japan Airlines check-in area located at Lobby #5 of the Honolulu International Airport.

**Nadine will give you your “E” ticket receipt & luggage tags. Please have your passport ready.**

Due to tight airport security, you will be checking in individually or as a family.

11:50a.m. Depart on JAPAN AIRLINES FLT. #791 bound for OSAKA/ KANSAI AIRPORT.

**A meal will be served one hour after take-off.**

**In-flight meals: LUNCH: Main entrée’: Beef or Chicken, Salad, Miso Soup, & Dessert**

**Prior to arrival: Croissant Sandwich with Mixed Fruits**

**Throughout the flight, you can enjoy JAL's SKY TIME drink (mixed peach & grape juice), other soft drinks, assorted beers, wines, sake, coffee, tea, and green tea are complimentary.**

### **FRIDAY, May 10<sup>th</sup>**

### **Osaka/ Kansai**

4:00p.m. We will be passing thru the International Date Line so you will be losing one day.  
Arrive Osaka/ Kansai International Airport. Upon arrival, immigration & custom procedures are required. Please pickup your own luggage(s) from the carousel at the baggage claim area.  
Please use the baggage cart for your convenience.

**\*\*Meet your bilingual tour guide: Ms. Kumie Kimi from Hokkaido \*\***

With the cart, we will take the elevator to the 2<sup>nd</sup> Floor & walk over to AEROPLAZA to NIKKO KANSAI AIRPORT HOTEL for your one night stay. From the Passenger Terminal Building, it takes about 5 minutes to walk to the hotel.

On the left-hand side of the 2<sup>nd</sup> Floor hotel entrance, there's a ‘LAWSON’ Convenience Store  
After check-in, the rest of the evening at your leisure.

### **SATURDAY, May 11<sup>th</sup>**

### **Osaka/ Kansai – Amanohashidate**

7:00a.m.(starts) Breakfast at “the Brasserie” at the hotel. Check-out of the hotel.

8:30a.m. Today we will be going to AMANOHASHIDATE & INE in NORTHERN KYOTO.

Amanohashidate is a pine covered sandbar that spans the mouth of Miyazu Bay in the scenic, coastal region of northern Kyoto Prefecture. Viewed from the mountains at either end of the bay, the Amanohashidate Sandbar (which roughly translates to "bridge in heaven") looks like a pathway between heaven and earth. The scene has been admired for centuries and is ranked among Japan's three most scenic views.

Amanohashidate View Land is the best point from which to view Ama no Hashidate (Bridge to Heaven). The line of pine trees visible from here are called the Hiriyukan (literally, “view of the flying dragon”), because they seem to be climbing into the heavens. We will take a cable car to Kasamatsu Park and enjoy the scenic view. You can try to “Matanozoki”, if you look at Amanohashidate upside down through your legs, it appears to ascend to heaven.



**Amanohashidate Town**



**“Matanozoki”**



**Ine Fishing Village**

11:30a.m.

Japanese Set Menu for lunch around the Amanohashidate area.

After lunch, we will proceed on to Ine. Running along the shore at Ine Bay you can find 230 "Funaya" (houses built on the water's edge with a garage like space for boat mooring beneath). It is hard to find

such a unique and picturesque scene matched in the whole of Japan. Funaya developed to make maximum use of the narrow strip of land between the mountains and the sea in this locality where the tidal changes are not so great. On the ground floor is a bay for a boat, a place to put equipment, and a workshop. It is here preparations for fishing trips, maintenance of nets, and drying of fish etc. takes place. Upstairs is their living quarters.

After sightseeing of Ine, check-in at KYOTO MIYAZU HOTEL, western style hotel with both open air onsen and indoor onsen “Hagoromo-no-Yu”.

Japanese Set Menu Dinner at the hotel.

( B, L, D )

### **SUNDAY, May 12<sup>th</sup>**

### **Miyazu – Miyama Town – Kyoto City**

7:00a.m.(starts) Breakfast at the hotel. Check-out of the hotel.

9:00a.m.

Transfer to MIYAMA TOWN a remote, rural area in the mountains 30 kilometers north of central Kyoto. The main attraction among them is the northern village or KAYABUKI NO SATO, which features nearly 40 farmhouses with thatched roofs . This area has a higher percentage of thatched roof houses than any other place in Japan. Dec. of 1993, this area was designated by the national government as an Important Traditional Building Preservation District.

5-4-4 stop along the way to MICHINO EKI “SPRINGS HIYOSHI” for local products and “ASHIYU” foot onsen.

MIYAMA KAYABUKI MUSEUM has displays of old folk tools and implements and related documents ranging from the Edo Period to early Showa. This museum also shows visitors a look at mountain village life.

Lunch on your own around Miyama Town.



OISHI SHUZO (Sake Brewery) in Miyama and last stop, MICHINO EKI “MIYAMA FUREAI HIROBA”, you can purchase some local products of Miyama Town.

After the tour of MIYAMA TOWN, we will continue on to KYOTO.

We will stay 3 nights at MIYAKO HOTEL KYOTO HACHIJO, located across Kyoto JR Station and around the corner is Kyoto Aeon Mall (hours: 10am-9pm except Kohyo Supermarket, Daiso(100 Yen Shop), Uniqlo, Muji and Restaurants on the 4<sup>th</sup> floor including Kaiten Sushi, open till 10pm). ( B )

### **MONDAY, May 13<sup>th</sup>**

### **Kyoto ( 1 day of Hands on Experience )**

7:00a.m.(starts) Breakfast at the hotel.

9:00a.m.

Today we will do a special tour, “HANDS ON EXPERIENCE” KYOTO YUZEN DYEING, Kyo-yuzen is one of the dyeing methods developed in Kyoto during the Edo era of the mid to late 17th century. You can experience a traditional craft of Kyoto easily, and after the lesson, you can take home the Kyo-Yuzen item that you made today.



Next hands on experience is TAIKO LESSON also known as WADAIKO, a traditional type of drum native to Japan. Learn the basic taiko technique and simple traditional song.

12:30-2:30p.m.

Lunch on your own and some shopping time at KYOTO AVANTI. Inside the building is DON QUIJOTE, DAISO (100 Yen Shop), DRUG STORE, & RESTAURANTS (B1 Floor).

After lunch, the last hands on experience is YATSUHASHI MOCHI, a Japanese confectionery sold mainly as a souvenir sweet. It is one of the best known meibutsu (famous regional products) of Kyoto, sold everywhere in Kyoto. You will be making Yatsuhashi from scratch and also visit the factory where raw unbaked Yatsuhashi is being produced.

4:30p.m.

Arrive back to MIYAKO HOTEL KYOTO HACHIJO Evening at your leisure time. ( B )

### **TUESDAY, May 14<sup>th</sup>**

### **Kyoto – Arashiyama – Kyoto**

7:00a.m.(starts) Breakfast at the hotel.

8:30a.m.

A full day sightseeing tour of ARASHIYAMA on a chartered bus.



Upon arrival, take the Sagano Trolley Train (Sightseeing Tram) to Kameoka, a small town 4.5 miles away from Kyoto and across a spectacular mountain pass to the west.

Known as the ‘Romantic Train’ or called in Japanese ‘Torokko Ressha’, its open air carriages allow for easy photography, as you are sedately wound around steep, forested canyons and plunged through tunnels. The trip takes around 20 minutes, 1 way, we will do round trip on the same train.



Stay on the same Romance Train from Kameoka to Arashiyama. Upon arrival at Arashiyama, we will experience riding on the “RICKSHAW” for 1 hour thru the famous bamboo forest and rice fields.

12:30p.m. Lunch at a RESTAURANT ARASHIYAMA on the 2<sup>nd</sup> floor. After lunch, you will have some free time to walk around on your own and do some shopping in Arashiyama.

4:30p.m. Arrive back to MIYAKO HOTEL KYOTO HACHIJO . Evening at your leisure time. ( B , L )  
**Please pack an overnighter bag for your trip to Lake Kawaguchi. One piece of the luggage will be transported by baggage truck to Tokyo.**

### **WEDNESDAY, May 15<sup>th</sup> Kyoto – Mishima – Lake Kawaguchi**

6:30-7:30a.m. Breakfast at the Dining Café & Bar “RONDE”

9:15a.m. Check-out of the hotel.

9:30a.m. Walk over to JR Kyoto Station, upon arrival to the Shinkansen track area, you will have time to buy your snacks to eat on the train.

9:58a.m. Board the “SHINKANSEN HIKARI #462” Bullet Train to JR Mishima Station.

Inside the Shinkansen, you can also buy hot coffee, ice cream, & etc.

11:56a.m. Arrive at Mishima Station and transfer to FUJI by private coach visiting FUJI SHIBAZAKURA FESTIVAL.



During the Fuji Shibazakura Festival, the Mt. Fuji Delicious Foods Festival will be held in the park’s restaurant and shop area, with stalls featuring delicious treats from different places around the mountain. Transfer to Fujiyoshida, stay at HIGHLAND RESORT HOTEL & SPA (western style room) for 1 night. A hotel with its own onsen (hot spring bath) one of Japan's largest bath houses made from pure wood. Buffet Dinner included at the hotel. ( B , D )

4:00p.m.

6:00p.m.

### **THURSDAY, May 16<sup>th</sup> Fujiyoshida – Fujikawaguchiko - Tokyo (Odaiba)**

7:00a.m. Breakfast at the hotel.

9:00a.m. Today we will be visiting FUJIKAWAGUCHIKO area.

IYASHI no SATO stands on the site of a former farming village on the western shores of Lake Saiko. The village's traditional thatched roofed houses were reconstructed and reopened as an open air museum and craft village where people can learn about the culture and try out and purchase different local handicrafts.



Arrive at OSHINO HAKKAI, a small village with 8 springs of Mt. Fuji. The name was given to 8 ponds filled with melted snow water that has taken more than 800 years to filter through the underground layer of Mt. Fuji. The water of Oshino Hakkai is ranked among the best quality water of Japan. So bring a empty water container if you want to fill it up with Mt. Fuji water. Transfer to TOKYO via Expressway with 1 restroom stop at EBINA SERVICE AREA.

- 5:00p.m. Check-in at HOTEL GRAND NIKKO TOKYO DAIBA (4.5 stars rating, deluxe hotel) for 3 nights in Odaiba.  
This hotel located in Odaiba (an artificial island in Tokyo Bay) overlooking the Rainbow Bridge, across from Aqua City Shopping Mall, and 10 minutes walk to Diver City Shopping Mall.  
The rest of the day at your leisure. ( B )  
For dinner you can go to Aqua City: The 1<sup>st</sup> floor has a Food Court, on the 5<sup>th</sup> floor there's a Sizzler Restaurant with all you can eat salad bar and Tsukiji Shokudo "Gen chan". 6<sup>th</sup> floor there's a Kaiten Sushi.  
**Aqua City - most shops close at 9:00pm, restaurants at 11:00pm**

## **FRIDAY, May 17<sup>th</sup>**

## **Tokyo Shopping Tour**

- 6:30a.m.(starts) Buffet breakfast at hotel.  
9:30a.m. First stop, TSUKIJI OUTER MARKET, Japan's "FOOD TOWN" where one can encounter all kinds of Japanese traditional foods. A mixture of wholesale and retail shops along the numerous restaurants. New culinary trends are born here. Lunch on your own at Tsukiji.  
12:30p.m. Colorful ASAKUSA KANNON TEMPLE, where incense fills the air and colorful stalls of the Nakamise Arcade, join visitors and locals who come to shop for souvenirs and gifts.



**Tsukiji**



**Asakusa Kannon Temple**



**Asakusa Famous Melon Pan**

- 2:30p.m. Some shopping time at UENO'S AMEYOKKO, a busy market street along the Yamanote Train Line tracks between Okachimachi and Ueno stations.  
Our first stop shop will be to MARUYASU which sells smoked scallops, ika (cuttlefish), smoked tako (octopus), almond tiramisu chocolate. They also give special discounts to HAWAII GROUPS. NIKI no KASHI, one of Ameyoko's most famous vendors. They have been in business since 1947, a large discount shop for rice crackers, sweets, candies, and other food items.  
5:15p.m. Arrive back at GRAND NIKKO TOKYO DAIBA HOTEL.  
The rest of the evening at your leisure. ( B )

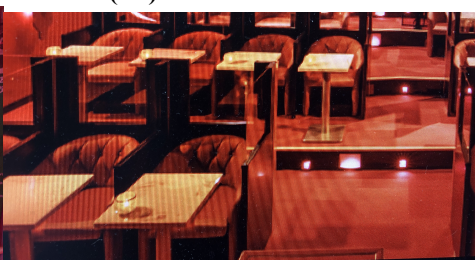
## **SATURDAY, May 18<sup>th</sup>**

## **Tokyo – Sugamo shopping & Roppongi Show**

- Breakfast at hotel.  
12:00p.m. Drive by IMPERIAL PALACE and the NATIONAL DIET (Government) BUILDING.  
1:00-2:45p.m. First stop, SUGAMO, "Senior Citizen Harajuku" this shopping street is lined by over 200 shops that sell clothing, traditional food and other goods marketed toward the elderly. Among the most popular items is the district's signature red underwear, which comes in a variety of styles and is thought to bring luck.  
3:15p.m. Arrive at Roppongi "KINGYO". Before the show, we will be served a some food & 1 drink included.  
4:00-5:20p.m. Enjoy weekend afternoon show with pretty, fascinating and powerful performance given by the male and "Mahu" transsexual dancers through the 50-minute show time, will definitely dazzle you!  
5:30-6:30p.m. One hour shopping time at DON QUIJOTE ROPPONGI.  
6:30p.m. Transfer back to GRAND NIKKO TOKYO DAIBA HOTEL.  
7:00p.m. Arrive back to the hotel. ( B )



**Roppongi Kingyo**



**Inside sitting arrangements**



**Kingyo's Mahu Dancers**

## **SUNDAY, May 19<sup>th</sup>**

## **Tokyo (Haneda) – Honolulu**

- Buffet breakfast at the hotel.  
11:00a.m. Regular check-out time at the hotel. Your baggage will be stored with the Bell Desk.  
Free time at your leisure until our departure time.  
4:00p.m. Depart hotel for TOKYO HANEDA INTERNATIONAL AIRPORT on a chartered bus.  
5:15p.m. Upon arrival, please have your passports ready. You will then check-in at the Japan Airlines Counter individually or as a family.  
After check-in, you will have some free time to have a snack and do some last minute shopping.



9:00p.m. Depart on Japan Airlines Flt.#74 bound for Honolulu.  
A meal will be served one hour after take-off. Crossing the International Date Line, you will arrive in Honolulu on the same day you departed Japan, Wednesday morning.

9:30a.m. Arrival at DANIEL K INOUE HONOLULU AIRPORT on May 19<sup>th</sup>, Sunday, morning. ( B )  
**Thank you for choosing N & K Travel Service, Inc.**

**Subject to change without any notice**

Based on 18-25 full paying tour members & based on the yen exchange rate.

Max: 25 full paying tour members

Tour cost is subject to change according to any taxes and fuel surcharge increases on the airfare and the rate of the exchange between US dollar and Japanese yen.

Final payment, check payment only.

Group Airfare(based on 10 people or more and Economy Class Seating) is based on tariffs in effect on 8/11/2023

Upgrade to Premium Economy Seats for the International Flights (from Honolulu to Haneda and back)

\$1000.00 additional per person (limited to 10 seats and need to fill the 10 seats to receive the group airfare).

As a Premium Economy Class passenger, you will be able to relax prior to your flight's departure in the spacious comfort of the JAL Sakura Lounge in Honolulu and Tokyo/ Haneda on your return.

No deviation on the group airfare.

**\*\*Please sign-up by Jan 12<sup>th</sup>, 2024 \*\* Full payment is due by Feb 9<sup>th</sup>, 2024\*\***

**Tour Cost: \*\* Exchange rate: 136-138 Yen per 1.00 U.S. dollars \*\*based on 18 people min /25 max\*\***

**TWIN/ TRIPLE OCCUPANCY: \$4725.00 per person/ Premium Economy: \$5725.00**

**SINGLE OCCUPANCY: \$5450.00 per person/ Premium Economy: \$6450.00**

***Tour Cost Includes:***

***\*\*Round trip on Japan Airlines from Honolulu to Osaka and back from Tokyo/Haneda to Honolulu \*\*Economy Class\*\****

***· 1 way transfer from GRAND NIKKO TOKYO DAIBA HOTEL to Tokyo/ Haneda International Airport***

***· 9 Nights Hotel accommodations (requested all non smoking rooms)***

***· Daily Breakfasts, 2 Lunches & 2 Dinners***

***· Admission Fees***

***· Pre-luncheon with the local tour guide***

***· Local experienced bilingual tour guide from N & K Travel and Japan English speaking licensed tour guide***

**Land Cost Only: Individual arrangements to meet the group are not included like the transportation from Grand Nikko Tokyo Daiba Hotel to Tokyo/ Haneda Airport is not provided if taking different airlines.**

Based on 18-25 full paying tour members:

**TWIN/ TRIPLE OCCUPANCY: \$3725.00 per person**

**SINGLE OCCUPANCY: \$4450.00 per person**

**CANCELLATION POLICY for the Land Portion:**

91 days prior to departure – Full refund

90-45 days prior: 50% cancel fee of the tour price, per person charge

44-30 days prior: 75% cancel fee of the tour price, per person charge

29 days prior or less: 100% cancel fee of the tour price, per person, no refund.

**\*\*Any additional individual arrangement may not be refundable, Please check with N & K Travel\*\***

**CANCELLATION POLICY for the Air Portion with Japan Airlines Group Seats:**

**No deviations and no upgrades are allowed. Check payment only.**

90 days prior to departure - \$100.00 per person

Once ticketed/ to make a name change, there's an exchange fee.

Once ticketed/ \$400.00 cancellation penalty fee applies per person.

Once ticketed/ any changes for the return date, \$350.00 penalty fee + fare difference.

**TRAVEL INSURANCE:**

To protect against cancellation charges, optional travel insurance is recommended and is available thru N & K Travel.

Rates are subject to change. Coverage and rates for travel insurance may vary by state. For more

information, please call our office or email us.



758 Kapahulu Avenue, Ste#220 \*\*\* Honolulu, HI. 96816

Tel: (808) 739-9010 Fax: (808) 735-0142 TAR#4988

Email address: [nandktravel@hawaiiantel.biz](mailto:nandktravel@hawaiiantel.biz)

## **GENERAL CONDITIONS for Tours to Okinawa & Japan**

### **TOUR INCLUDES:**

Hotel accommodations, transfers, sightseeing, and round trip air transportation from Honolulu, economy seating.

Adjustments will be made if there is increase in fuel surcharges and any fluctuation in exchange rates between US Dollars and Japanese Yen.

### **AIR TRANSPORTATION:**

Air service within tours is included except for people buying the land portion only. Airfare inclusive rates are based on advanced purchase and may be subject to certain airline restrictions and penalties.

Adjustments will be made if there is any increase on taxes.

### **MEALS:**

Meals included are noted on the brochure or itineraries. All other meals are the responsibility of the individual. Meal codes are: **B** – Breakfast, **L** – Lunch, **D** – Dinner.

### **RESERVATIONS & DEPOSITS:**

Reservations should be made as soon as possible by filling out the application form and sending a deposit of \$100 per person. Reservations are based on a first come first serve basis. Returned check fee of \$25.00 per check.

### **CANCELLATION POLICY for the Land Portion:**

91 days prior to departure – Full refund

90-45 days prior: 50% cancel fee of the tour price, per person charge

44-30 days prior: 75% cancel fee of the tour price, per person charge

29 days prior or less: 100% cancel fee of the tour price, per person, no refund.

**\*\*Any additional individual arrangement may not be refundable, Please check with N & K Travel\*\***

### **CANCELLATION POLICY for the Air Portion with Japan Airlines Group Seats:**

**No deviations and no upgrades are allowed. Check payment only.**

90 days prior to departure - \$100.00 per person

Once ticketed/ to make a name change, there's an exchange fee.

Once ticketed/ \$400.00 cancellation penalty fee applies per person.

Once ticketed/ any changes for the return date, \$350.00 penalty fee + fare difference.

**TRAVEL INSURANCE:** To protect against cancellation charges, optional travel insurance (cancellation, health, luggage) is recommended and is available thru N & K Travel.

Call for more details.

### **MILEAGE:**

N & K Travel will give the mileage number on your tour form to the airline, however, we will not be responsible for missing credit. Also, if you are not a member of mileage program, we will not be responsible for your enrollment.



**GRATUITIES:**

Gratuities for the bilingual local guide, bus driver & guide are **not included**. The recommended gratuity for the local Japanese-English Speaking Guide is 500 Yen per person per day and for the bus driver that will be with the group, 2 days or more, 250 Yen per person per day.

**PASSPORTS:**

All clients are reminded that a valid passport is necessary in all cases. The cost of obtaining these documents will be the responsibility of the traveler. The organizer assumes no responsibility whatsoever, should a client, for any reason be refused entry into any particular country, and the subsequent costs entailed will have to be met by traveler in accordance with obligations that the organizer has in virtue of the contracts held with third parties.

Passport must be valid within 6 months at time of departure.

A photo copy of your passport is required for all tours.

**IF THE TOUR OPERATOR CANCELS:**

Should N & K Travel Service, Inc. cancel a departure for any reason, your money will be fully refunded.

**CHANGES IN ITINERARIES:**

N & K Travel Service, Inc. will make every effort to operate all tours as disclosed in this document. However, circumstances may arise which would require an adjustment to the tour. We will however do all that is possible to avoid such changes, but we must reserve the right to make such modifications if they are determined to be necessary.

**RESPONSIBILITY:**

This travel agency and/or its agents, sub-agents, sub-offices and affiliates act only as agents for the owners and contractors providing means of transportation or other services and all tickets and/or vouchers are issued subject to any terms and conditions under which such means of transportation or other services were offered or provided. The issuance and acceptance of such tickets and/or vouchers shall be deemed to be consent to the further conditions that this travel agency, its agents, sub-agents, sub-offices and affiliates shall not become liable or responsible in any way in connections with such means of transportation or other services, or for any loss, injury or damages arising from the default of a tour operator/carrier, lost/damaged baggage, trip cancellation, bad weather, natural disaster or other acts of God. We reserve the right to cancel any tour 45 days or more prior to departure date. All rates in this brochure/itinerary are subject to change without notice.



Travel Service Inc., Hawaii

758 Kapahulu Avenue Suite 220 Honolulu, Hawaii 96816

Tel: (808) 739-9010 Fax: (808) 735-0142 TAR#4988 Email address: [nandktravel@hawaiiantel.biz](mailto:nandktravel@hawaiiantel.biz)

### May Special Japan Tour

( May 9 – May 19, 2024 )

PLEASE TYPE or PRINT: (Name as it appears on passport)

Mr. Mrs./Ms. \_\_\_\_\_  
Last First Middle Name

Address \_\_\_\_\_  
Street City State/Zip code

Business or Cellular Phone: \_\_\_\_\_ Home Phone: \_\_\_\_\_

Occupation: \_\_\_\_\_ Birth Date: \_\_\_\_\_

Passport No.: \_\_\_\_\_ Issue Date: \_\_\_\_\_

E-mail address: \_\_\_\_\_

Japan or Hawaiian Airlines Mileage: \_\_\_\_\_ TSA Precheck # \_\_\_\_\_  
Global Number # \_\_\_\_\_

In case of emergency, contact: \_\_\_\_\_

Relationship: \_\_\_\_\_ Phone: \_\_\_\_\_

Rooming: Single \_\_\_\_\_ Twin(2 beds) \_\_\_\_\_ Triple(3 beds) \_\_\_\_\_

Requested roommate(s): \_\_\_\_\_

I am also signing up for:

Mr. / Mrs. / Ms. \_\_\_\_\_

Occupation: \_\_\_\_\_ Birth Date: \_\_\_\_\_

Passport No.: \_\_\_\_\_ Issue Date: \_\_\_\_\_

Japan or Hawaiian Airlines Mileage: \_\_\_\_\_ TSA Precheck # \_\_\_\_\_  
Global Number # \_\_\_\_\_

Sign Up by: January 12, 2024 / Full Payment is due on February 9, 2024

Adjustments will be made if there is any increase in taxes, fuel surcharge, and fluctuation in exchange rates.

**Tour Cost:** based on 15-25 full paying tour members:\*\* Exchange rate: ¥136-138 per U.S. dollars\*\*

TWIN/ TRIPLE: \$4725.00 per person \_\_\_\_\_ Premium Economy Seat: \$5725.00 \_\_\_\_\_

SINGLE: \$5450.00 per person \_\_\_\_\_ Premium Economy Seat: \$6450.00 \_\_\_\_\_

Please make checks payable to N & K TRAVEL SERVICE, INC.

Would like purchase travel insurance? Yes: \_\_\_\_\_ No: \_\_\_\_\_ (further information please call the office)

Credit card payment only for the air portion. Land portion & travel insurance, check payment only)

I/We the undersigned have read carefully and understand the General Conditions pertaining to the above stated tour and agree to these conditions. All information will remain confidential.

Name: \_\_\_\_\_ Signature: \_\_\_\_\_ Date: \_\_\_\_\_